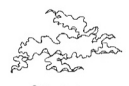




2,3 Rock Barnacle (*Balanus balanoides*)



2 Sea Lettuce (*Ulva lactuca*)



2,3,4 Green Crab (*Carcinus maenas*)



2,3,4 Blue Mussel (*Mytilus edulis*)



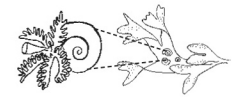
4 Irish Moss (*Chondrus crispus*)



3 Knotted Wrack (*Ascophyllum nodosum*)



3 Left-coiled Tubeworm (*Spirobis borealis*)



3 Right-coiled Tube Worm on Rockweed (*Spirobis spirillum*)



3,4 Rock Crab (*Cancer irroratus*)



2,3,4 Dog Whelk (*Thais lapillus*)



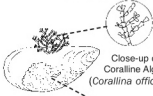
2,3 Periwinkle (*Littorina Sp.*)



5 Green Sea Urchin (*Strongylocentrotus droebachiensis*)



5 Sea Grapes (*Molgula Sp.*) on Piling



5 Bubblegum Algae (*Lithothamnium*) on Blue Mussel (*Mytilus edulis*)



5 American Lobster (*Homarus americanus*)



5 Stalked Sea Squirt (*Botanella ovifera*)



5 Crumb of Bread Sponge (*Halichondria panicea*)



5 Brown Kelp (*Laminaria agardhii*)



5 Sea Colander (*Agarum cribrosum*)



5 Sea Vase (*Clona intestinalis*)



5 Northern Sea Star (*Asterias vulgaris*)



5 Golden Star Tunicate on Irish Moss



5 Golden Star Tunicate (*Botryllus schoelleri*)



5 Filled Anemone (*Metridium senile*)



5 Bushy Bryozoan (*Bugula turrita*)



5 Sea Lace or Lacy Crust on Kelp (*Membranipora sp.*)



5 Club Tunicate or Rough Sea Squirt (*Styela partita*)



3 Rockweed (*Fucus sp.*)



3,4 Hermit Crab (*Pagurus sp.*)



3,4 Amphipod (*Gammarus sp.*)

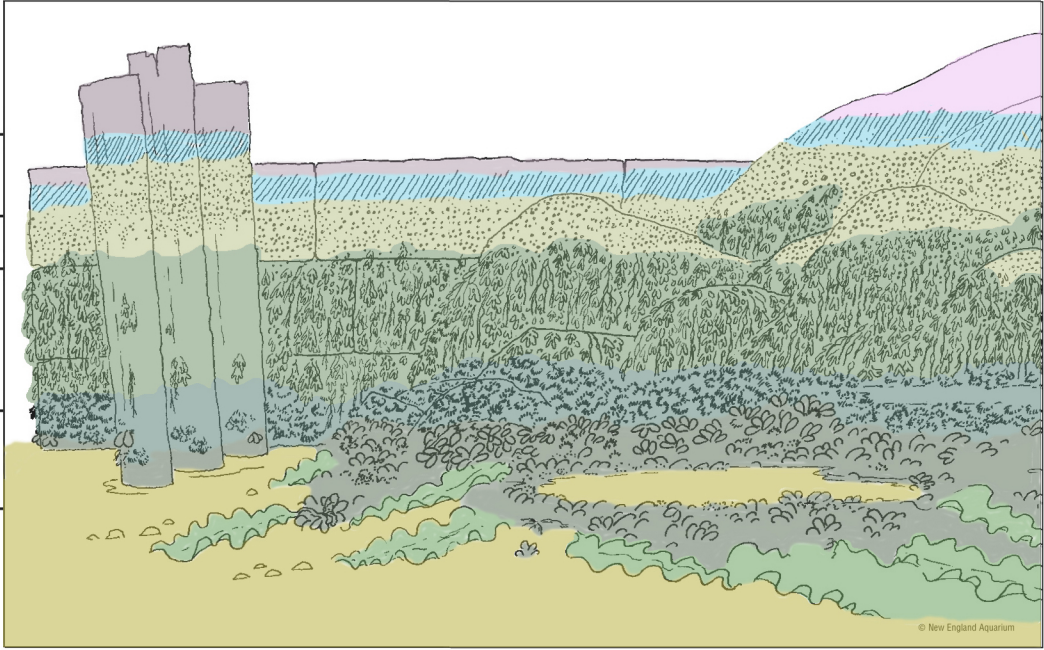


3,4 Limpet (*Acmaea testudinalis*)



3,4 Common Slipper Shell (*Crepidula fornicata*)

# ROCKY SHORE



© New England Aquarium