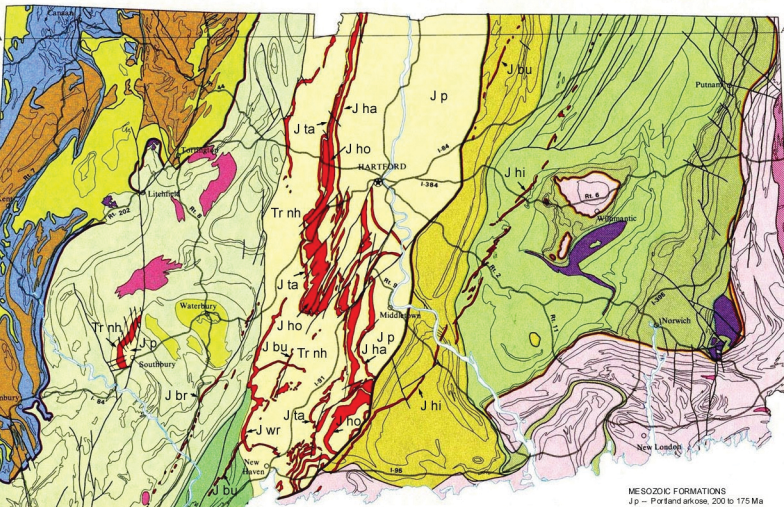


# GENERALIZED BEDROCK GEOLOGIC MAP OF CONNECTICUT



- Honey Hill — Lake Char Fault
- Eastern Border Fault
- "Cameron's Line" (fault)
- Other faults
- Selected geologic boundaries

N. Y.

R. I.



0 SCALE 10 MILES

### NEWARK (HARTFORD BASIN) terrane

- Clastic sedimentary rocks (redbeds, conglomerate, arkosic sandstone, and shale, Early Jurassic to Late Triassic age)
- Basalt (lava flows) and dolerite (dikes and sills), Early Jurassic age

### IAPETOS (OCEANIC) terrane

Middle to Early Paleozoic age (350–500\* million years old) metamorphosed sedimentary and igneous rocks

- Schist and gneiss (includes granitic gneiss) of the Hartland and Gneiss Dome belts, Connecticut Valley Synclinorium
- Schist, gneiss and phyllite (includes greenschist and greenschist) of the Orange-Milford belt, Connecticut Valley Synclinorium
- Gneiss, schist and quartzite of the Bronson Hill Anticlinorium (volcanic arc affinity)
- Schist and schists of the Merrimack Synclinorium
- Gneiss and schist of the Putnam-Nashoba belt (may be Proterozoic Z age)

### PROT-O-NORTH AMERICAN (CONTINENTAL) terrane

Early Paleozoic and Proterozoic Y age (450–1,100 million years old) metamorphosed sedimentary and igneous rocks

- Schist of the Taconic Allochthon (displaced Iapetus Terrane), Early Paleozoic age
- Marble, schist and quartzite of a continental shelf sequence, Early Paleozoic age
- Gneiss (includes granitic gneiss) and schist of "Greenville" basement, Proterozoic Y age (~1.1 billion years old)

### AVALONIAN (CONTINENTAL) terrane

Proterozoic Z age (600–700\* million years old) metamorphosed sedimentary and igneous rocks and Middle Paleozoic age (~370 million years old) metamorphosed igneous rocks

- Gneiss (includes granitic gneiss), schist and quartzite — Hope Valley belt, Proterozoic Z age
- Gneiss (includes granitic gneiss) of Proterozoic Z age intruded by Middle Paleozoic granitic plutons — Ermond Dothan belt

### SELECTED PLUTONIC ROCKS

- Granite, nonfoliated, Late to Middle Paleozoic age (270–370 million years old)
- Gabbro and related rocks, Middle Paleozoic age (350–450 million years old)

### MESOZOIC FORMATIONS

- Jp — Portland arkose, 200 to 175 Ma
- Jha — Hampden flood basalt, 200 Ma
- Jbr — Bridgeport dolerite dike, source for Jha
- Jho — Holyoke flood basalt, 200 Ma
- Jbu — Butternut dolerite dike, source for Jho
- Jta — Talcott flood basalt, 201 Ma
- Jwr — West Rock and other dolerite sills
- Jhi — Higganum dike, source for Jta and Jwr
- Trnh — New Haven arkose, 225 to 201 Ma